

Sterilization, Hygiene and Maintenance

#whdentalwerk



video.wh.com

Now at
your dealer
or **wh.com**



Interrupting the chain of infection.

Good hygiene management is an essential part of everyday work in dental practices, because it is all about the safety of your patients, your staff and yourself.

Sterilization, Hygiene and Maintenance

COMPANY	4–5
Product overview for Thed+/Thed, Assistina Twin, Assistina One	8–9
Product overview for Lisa, Lisa Mini, Lara XXL, Lara XL, Lara, Lina, Lyla, Lexa	10–11
CLEANING AND DISINFECTION	
Thed+/Thed, Teon+/Teon, U-Son	12–17
REPROCESSING	
Assistina Twin, Assistina One	18–21
Q-Dry	22
System overview adaptors	23
STERILIZATION	
Lisa, Lisa Mini, Lara XXL, Lara XL, Lara, Lina, Lyla, Lexa	24–41
Accessories	42–43
SEALING	
Seal ² /SealVal ²	44–45
SECURE PACKAGING	
EliReel	46–47
WATER TREATMENT	
Multidem, Osmo, Water Distiller, Dist 3	48–53
CLEANING AND DISINFECTION AGENTS	
BePro	54–55
TECHNICAL DATA AND ADAPTORS	
Technical data	56–62

People have **Priority**

W&H at a glance

- › Headquarters in Austria
- › 1,300 employees worldwide
- › Established in 1890 in Berlin by Jean Weber and Hugo Hampel
- › Production facilities in Austria, Italy and Sweden
- › Represented in 130 countries
- › Export share over 95%

More information at
wh.com



W&H Dentalwerk
Bürmoos (A)



W&H Sterilization
Brusaporto (I)



The stakes are high.
We are working with
people.

Healthy development occurs when action is taken with foresight. This applies for sterilization, hygiene and maintenance just as it does for W&H: after all, as a family-owned company, we have been acting with the appropriate far-sightedness for generations.

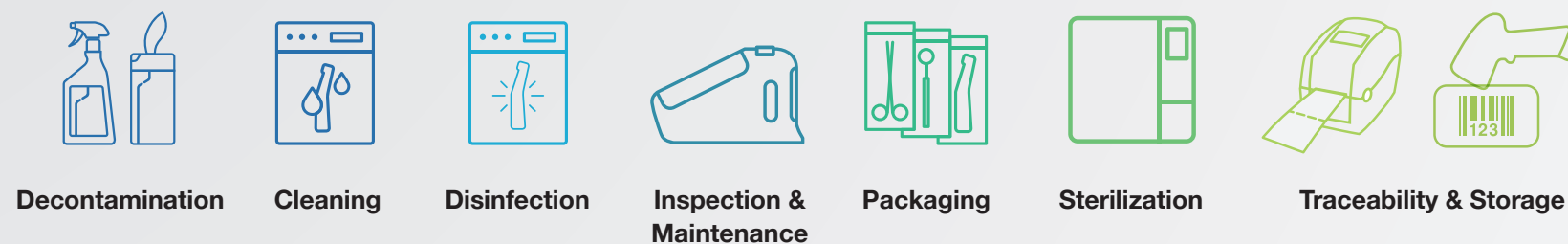
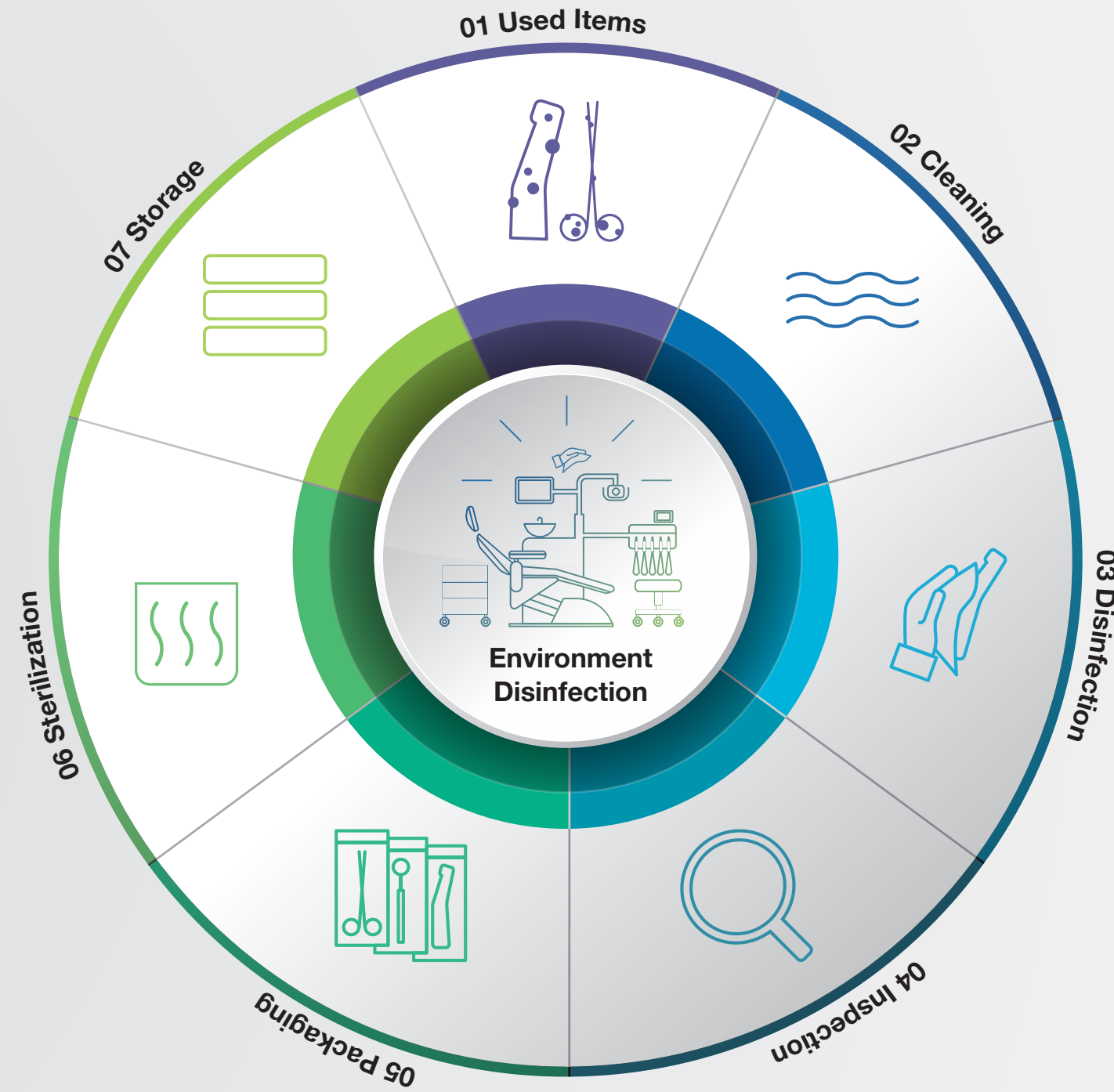
The secret to our success: W&H has always focussed on people – regardless of whether they are partners, customers, patients or employees. It would only be natural for you now to ask critically: Is that really put into practice? Our suggestion: put us to the test!

W&H AIMS

Safety first!

Hygiene is extremely important in the dental practice. W&H AIMS is here to help: with a wide product portfolio, fundamental knowledge and all relevant information at a glance.

For your safety and the safety of your patients. **aims.wh.com**



All the **advantages** at a glance



Dental assistant

“Thed fits in perfectly as part of our entire reprocessing process and simplifies our workflow significantly.”



Dr Christian Müller

Dentist with his own practice

“Now I can be certain that my instruments can be reprocessed between treatments without my patients and I having to wait. A real bonus for my dental practice.”



Thed, Thed+

- › Two washing levels
- › Fast cycles with high cleaning performance
- › Active air-drying with HEPA filter
- › Full connectivity options
- › Internal positioning of process chemicals
- › Unique cartridge system (tabletop)
- › Modern design
- › Comprehensive range of accessories
- › User-friendly interface

Additional Thed+ features:

- › EliSense: device status indicator
- › Automatic rack recognition
- › Automatic manifold injector recognition
- › Automatic program recommendation
- › Automatic adjustment of cycle time, water, process chemicals, and power consumption
- › Washing chamber with internal light

[More information from page 12](#)

Assistina Twin

with Quick Connect by W&H

- › Easiest operation
- › Instrument reprocessing in just 10 seconds
- › Non-stop assembly through two process chambers that can be used alternately
- › Assistina Twin Care Set sufficient for reprocessing more than 2,800 instruments
- › Active suction of aerosols with integrated HEPA filter
- › Wide range of adaptors

[More information from page 18](#)

Assistina One

with Quick Connect by W&H

- › Instrument reprocessing in just 18 seconds without electrical supply
- › New quick adaptors to speed daily activities
- › Assistina One Care Set sufficient for reprocessing more than 2,800 instruments
- › Integrated HEPA filter to meet high hygiene standards
- › Blowing through and drying with compressed air

[More information from page 20](#)



All the **advantages** at a glance



Lisa

- › Easy to use with crystal-clear colour touch screen allowing intuitive navigation via the intelligent menu structure
- › EliSense technology for optimisation of daily workflow via LED indicators and touch screen
- › EliTrace technology for traceability of the sterilization process right down to the individual instrument and user
- › High level of additional security with Wi-Fi and W&H Steri App for controlling and real-time remote monitoring
- › High efficiency with patented Eco Dry + technology for reduction of cycle time
- › High level of ergonomics thanks to newly developed design
- › Programmable cycle start
- › Automatic water filling valve

[More information from page 24](#)



Lisa Mini

- › Instrument reprocessing with surprisingly short cycles
- › Small, but fully equipped with all the features and functionalities of a large type B sterilizer
- › Flexible location options and applications
- › Optional EliTrace upgrade via Activation Code system
- › Additional security with Wi-Fi and W&H Steri App for controlling and real-time remote monitoring
- › Easy to use thanks to colour touch screen display and intuitive navigation

[More information from page 26](#)



Lara XXL

- › High capacity and flexibility with 38 litres chamber and optimized racks
- › Easy to position on a standard worktop with a depth of 60 cm
- › High efficiency with patented Eco Dry technology
- › Individual upgrades with Activation Code system
- › Intelligent menu structure with high operating comfort
- › Additional security with Wi-Fi and W&H Steri App for controlling and real-time remote monitoring
- › Easy to use thanks to colour touch screen display and intuitive navigation

[More information from page 28](#)



Lara XL

- › High efficiency with patented Eco Dry + technology
- › High capacity with 28 litre chamber
- › Individual upgrades with Activation Code system
- › Intelligent menu structure with high operating comfort
- › Additional security with Wi-Fi and W&H Steri App for controlling and real-time remote monitoring
- › Easy to use thanks to colour touch screen display and intuitive navigation

[More information from page 30](#)

Lara

- › Highest-performing sterilizer in its segment
- › Easy to use thanks to colour touch screen display for intuitive navigation through the intelligent menu structure
- › Individual increase of efficiency through upgrades with Activation Code system
- › High level of additional security with Wi-Fi and W&H Steri App for controlling and real-time remote monitoring
- › Paper-free documentation with high-capacity USB stick for automatic recording of all cycles
- › Ergonomic design

[More information from page 32](#)



Lina

- › The ECO B cycle reduces the cycle time by half
- › Colour touch screen display for simple navigation to all sterilization options
- › Automatic digital cycle recording on USB stick
- › Individual increase of efficiency through upgrades with Activation Code system
- › High level of additional security with Wi-Fi and W&H Steri App for controlling and real-time remote monitoring
- › Excellent value for money

[More information from page 34](#)



Lyla

- › S type sterilizer offers the best cycle time in its segment
- › Individual upgrades with Activation Code system
- › Upgradeability to B type sterilizer according to EN 13060
- › Colour touch screen for easy and efficient operation
- › Smooth surface design and ergonomic shape
- › Integrated data logger for improved traceability system

[More information from page 36](#)



Lexa

- › Large capacity sterilizer chamber with unique tray and exclusive design
- › User-friendly interface and high-end colour touchscreen for simple navigation to all sterilization option
- › Versatile sterilization program options with short cycle times
- › Superior vacuum-assisted drying
- › Meets stringent hygiene standards, including dynamic pulsed air removal, closed door drying and single-use water management
- › Built-in USB data logger for the digital cycle documentation

[More information from page 38](#)



The device fulfils
every wish

**More power, more speed,
more flexibility, or all of it?**

The thermal washer disinfectant devices Thed+ and Thed ensure powerful cleaning and disinfection, outstanding load flexibility, reduced reprocessing times and much more for the most demanding clinics.



Thed+, Thed



Powerful cleaning & disinfection

The cleaning and disinfection of the load is not only powerful and simultaneously gentle, but also fast. Instruments can be cleaned, disinfected, and dried in less than 60 minutes. Handpieces, for example, can be reprocessed in just 35 minutes.



Active air-drying with HEPA filter

To protect against recontamination, corrosion, and other damage, Thed devices ensure absolutely dry loads with the active air-drying feature.



Two washing levels

Depending on the load, one or two washing levels can be used with Thed devices. This enables an optimum capacity utilisation of the 64-litre chamber.



EliSense Device Status

Thanks to the LED light in the handle, Thed+ provides information about the device status at a glance to optimise both the workflow and the output.



Eco Dry technology

With Eco Dry, Thed+ is able to recognize the amount of load and adjust the optimum duration of the drying phase accordingly.



Integrated process chemicals

In the undercounter version, the process chemicals are simply positioned in a drawer, with the tabletop version behind a plinth panel. The tabletop version offers a unique W&H cartridge system, which makes changing the process chemicals is even easier.

High disinfection standard

Top performer for high cleaning standards.

W&H's Teon and Teon+ thermal washer disinfectors provide high quality benefits for efficient and effective cleaning and disinfection of your instruments.



Teon+, Teon



Smooth surface and modern design

The thermal washer disinfectors are distinguished by their high-quality performance and thus ensure a successful, holistic cleaning process for dental instruments. Thanks to their modern, elegant design, they can be perfectly integrated into your hygiene room.



Safety

The integrated spray arm monitoring enables excellent reprocessing results. The speed variable pump increases/decreases the pressure according to the step in the reprocessing process. The filter system removes dirt particles to prevent damage occurring to your instruments.



Convenience and ergonomics

The salt container integrated into the door ensures easy and convenient refilling. Thanks to the ergonomics concept, no equipment needs to be removed.



Rinsing chamber for optimal hygiene

The rinsing chamber enables higher throughput with excellent hygiene and purity. In addition, the optimal size allows a higher capacity per load.



Ease of use

The modern design and intuitive user guidance make it particularly easy to operate in the demanding everyday reprocessing routine. The display is easy to operate and also serves as a door opener.



W&H adaptor set

The W&H adaptor set was specially designed for mechanical reprocessing of accessories and small parts.

Cleaning with high-frequency sound waves

For safe reprocessing.
Ultrasonic cleaning is a quick and efficient method for perfect results. The use of ultrasonics facilitates removal of even the most stubborn deposits from difficult to reach areas where manual cleaning does not reach. The U-Son ultrasonic device from W&H enables highly effective cleaning.



U-Son



High capacity and volume
with two different versions of 6 litres and 3 litres.



Main switch on/off
loading and unloading in compliance with safety conditions.



Rounded corners
inside the tank for easy removal of dirt and residues.



Time & temperature settings
The U-Son device consists of a digital control panel that allows cleaning times and temperature to be controlled electronically.



Stainless steel
for excellent resistance to corrosion and a longer service life of the device.



BePro – Instruments
For the reprocessing of dental instruments, W&H offers the BePro Instruments products with particularly effective components.

Lubrication in record time

Simple, fast, efficient.

With its innovative dual-chamber system, record time lubrication and the environmentally friendly Care Set, it impresses all along the line. The Assistina Twin has now been enhanced with an innovative adaptor solution: **Quick Connect by W&H**. This adaptor system offers you even more benefits for your everyday practice.



Assistina Twin

with Quick Connect by W&H



Simple

It is the first reprocessing device which is equipped with two process chambers that can be used alternately.



Fast

W&H succeeded in decreasing the maintenance process to a record time of just 10 seconds.



Efficient

Thanks to the smart process monitoring, the Assistina Twin always achieves thorough maintenance with minimum consumption. The Assistina Twin Care Set only needs to be changed after around 2,800 instruments.



Groundbreaking technology

Thorough and comprehensive lubrication of the gear parts (orange) and cleaning of spray channels (green) thanks to innovative oil nebulization technology.



Safe

All aerosols are removed from the process chambers through active suction and an integrated HEPA filter.



Quick Connect by W&H

The Assistina Twin's innovative Quick Connect by W&H connection simplifies assembly and removal of straight and contra-angle handpieces and turbine handpieces. You can choose the appropriate adaptors for your requirements.

The ONE for a new level of maintenance

Fast, thorough and easy to use.

Assistina One speeds up daily operations and facilitates dental handpiece care. With the shortest cycle time in its class and its high-quality care results, the innovative maintenance solution is a top dental device – designed for top dental professionals.



Assistina One
with Quick Connect by W&H



Shortest cycle time

The entire lubrication and spray channel cleaning process only takes 18 seconds, making the Assistina One the fastest maintenance solution in its class. It only works with compressed air; no electric power supply is needed.



Quick Connect System

Flexible switching between handpieces with Quick ISO and Quick RM adaptors. Thanks to its wide range of adaptors, the Assistina One can meet the requirements of all clinics.



Innovative lubrication technology

With the ground-breaking technology of oil nebulisation, dental transmission instruments are lubricated even faster and more thoroughly than ever before.



Spray channel cleaning

By cleaning the spray channels and drying the inner parts with compressed air, it reduces potential blockages caused by limescale deposits and therefore ensures smoother operation, longer lifespan, and less service costs.



Cost-effectiveness process

The system uses exactly the amount of oil required for optimal instrument lubrication. More than 2,800 instruments can be maintained with just one Care Set, saving money, time, and oil spray cans.



Ready-to-use cartridges & Hepa Filter

Convenient cartridge management for refilling oil and cleaning liquids. With the active suction and HEPA filter, aerosols are removed from the process chamber, keeping the working environment clean and safe.

Perfect for drying your handpieces

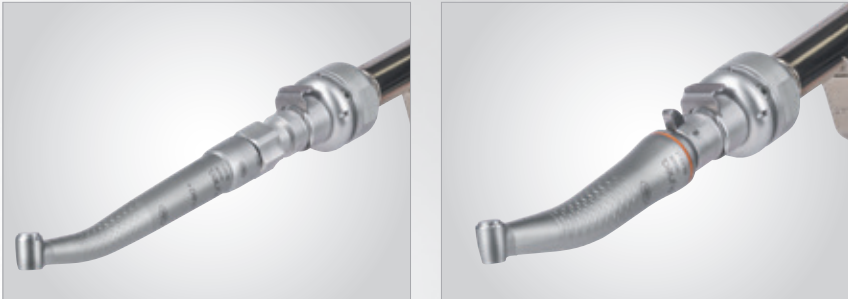
Q-Dry provides an optimal internal drying solution for handpieces after manual and automatic cleaning processes. By effectively removing liquids from within the handpieces, Q-Dry ensures that no spots are left on the pouches after sterilization.

Ergonomic design
Enjoy an intuitive user experience and the ability to dry other hollow instruments.

Quick Connect by W&H
With the Quick Connect feature, you can switch effortlessly between different types of handpieces.



Compatibility
Benefit from using the same adaptors found in the Assistina portfolio.



Q-Dry
with Quick Connect by W&H

System overview adaptors Assistina Twin & Assistina One

Straight and contra-angle handpieces

All straight and contra-angle handpieces with ISO connection	
Contra-angles with removable heads	Adaptor REF 02679000
T1 Classic from Sirona Dental Systems for contra-angle handpieces	Adaptor REF 02691000
FG chuck system (W&H, Sirona Dental Systems)	Adaptor REF 02693000
W&H handpiece and contra-angle head	Adaptor REF 05204600

Adaptor Quick ISO
REF 06422600



Turbines

W&H turbines, air scaler and air motors with Roto Quick system	W&H Adaptor REF 02690400
T1, T2, T3 from Sirona Dental Systems	Adaptor REF 02692000
Turbines with Multiflex connection from Kaltenbach & Voigt	Adaptor REF 04713200
Turbines with Borden 2(3)-hole connection	Adaptor REF 02083500
Turbines or adaptors with standard 4-hole connection (with or without light)	

Adaptor Quick RM
REF 06395100



Precision and perfection

Unique in its application.

The Lisa sterilizers offers intelligent and innovative solutions like EliSense and EliTrace for extraordinary user-friendliness as well as traceability down to the individual instrument. The result: convenience, safety and speed at a whole new level.



Lisa



EliSense

EliSense delivers information on the sterilization status, the temperature of the load and to optimise the daily workflow.



EliTrace

With EliTrace, the sterilization process can be traced and documented down to the individual instrument or instrument kit. Without additional software or computer.



Easy to use

The specially developed, crystal-clear colour touch screen guides you intuitively through the intelligent and simple menu structure.



Connected, simple, time-saving

With the W&H Steri App, you can monitor up to four sterilizers in real time using a smartphone or tablet from any place within your practice and all cycles are automatically saved at the same time.



High-performance

The reduced cycle time of 28 minutes for a 2 kg load ensures a longer lifespan of the instruments and reduced energy consumption. The innovative, patented Eco Dry+ technology adapts the drying time to reflect the mass of load.



New design

Its exterior is just as appealing thanks to an ergonomic, space-saving design and elegant, easy-maintenance contours.

Speeds you up

Lisa Mini speeds up your daily workflow.

The device impresses with incredible fast cycles and its flexible usability. The compact dimensions guarantee an optimal integration into the reprocessing room. Fully equipped, Lisa Mini also offers the peace of mind of a type B sterilizer such as our Lisa, Lara or Lina sterilizers.



Lisa Mini



Unbeatable cycle times
Thanks to the optimised cycle profile, wrapped instruments like handpieces can be sterilized in less than 18 minutes. Unwrapped loads can be sterilized in less than 9 minutes.



Small dimensions
Thanks to its small dimensions, Lisa Mini can be easily positioned in the reprocessing room. Moreover, it offers the possibility to stack items on top.



High load flexibility
Lisa Mini is available with a chamber size of either 3 litres or 5 litres. With the 3 litre chamber, Lisa Mini can reprocess up to 1 kg of load, which corresponds to up to 15 handpieces. In the 5 litre version, it is 1.5 kg, which corresponds to up to 22 handpieces.



Ready for the future
The sterilizer offers future-oriented connectivity options. The documentation of sterilization cycles is automatically saved via a high-capacity UBS stick. Wi-Fi and LAN connections offer the possibility to download cycle reports directly to any PC or smart device.



Advanced upgradeability
With the optional Activation Code EliTrace the sterilization process can be traced and documented down to the individual instrument or kit. Without additional software or computer.

Maximum capacity minimum dimensions

Surprisingly spacious chamber.

Compact external dimensions and an XXL chamber with 38 litres characterise the Lara XXL sterilizer and make it surprisingly spacious. Easy to position on a standard worktop, the device not only impresses with its high loading flexibility and simple navigation, but also with much more.



Lara XXL



38 litre chamber

Lara XXL is able to reprocess up to 12 kg of containers and 10 kg of wrapped instruments, which is about twice the capacity of a standard sterilizer. Thanks to its chamber size and its 6-tray rack, it is extremely flexible.



Compact outer dimensions

Due to its compact dimensions, Lara XXL is easy to install and without modification of the reprocessing room. A standard worktop with a depth of 60 cm is all you need to set up the XXL sterilizer.



Eco Dry technology

Lara XXL is able to automatically adjust the drying time for small loads (0.5 kg), average loads (3 kg) and full loads. Thus, a 3 kg load can be reprocessed in about 40 minutes using a type B cycle.



Connectivity and traceability

The sterilizer offers future-oriented connectivity options. The documentation of sterilization cycles is automatically saved via a high-capacity UBS stick. Wi-Fi and LAN connections offer the possibility to download cycle reports directly to any PC or smart device.



Activation Code system

With the optional Activation Code EliTrace the sterilization process can be traced and documented down to the individual instrument or kit. Without additional software or computer. The Fast cycle upgrade enables sterilization of unwrapped instruments, including handpieces in just 20 minutes.

Xceed Limits

Lara XL will exceed your expectations.

The device convinces with even more capacity, energy-saving and fast type B cycles as well as a wide range of connectivity and advanced traceability options.



Lara XL



Xceeding performance

The reduced cycle time of 40 minutes for a 2 kg load ensures a longer lifespan of the instruments and reduced energy consumption. The innovative, patented Eco Dry + technology adapts the drying time to reflect the mass of load.



Xceeding capacity

With its 28 litre chamber, Lara XL is able to reprocess up to 7 kg of wrapped instruments or 9 kg containers. Thanks to its 6-tray rack, it is extremely flexible.



Xceeding usability

The intelligent menu structure of the Lara XL sterilizer ensures extraordinarily high operating comfort: You can navigate to the different functions quickly and intuitively using the large colour touch display.



Xceeding connectivity and traceability

The sterilizer offers future-oriented connectivity options. The documentation of sterilization cycles is automatically saved via a high-capacity UBS stick. Wi-Fi and LAN connections offer the possibility to download cycle reports directly to any PC or smart device.



Xceeding upgradeability

With the optional Activation Code EliTrace the sterilization process can be traced and documented down to the individual instrument or kit. Without additional software or computer. The Fast cycle upgrade enables sterilization of unwrapped instruments, including handpieces in just 20 minutes.

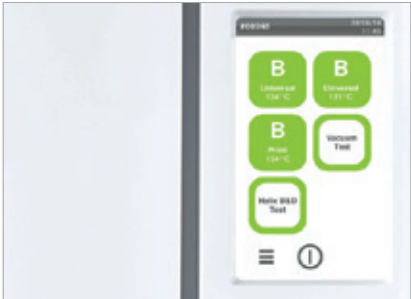
As unique
as your practice

Easy to expand with customized upgrades.

Sterilize safely, easily and quickly – plus, you can customize the device to suit your needs: the standard version of the Lara sterilizers already offers the fastest sterilization cycle in its class – including standard documentation. An additional, newly developed Activation Code system offers even more speed and extended documentation if you so wish – and ensures you are optimally equipped even if your requirements change.



Lara



Fast, faster, Lara
The standard version for type B cycles already gives you more time for your patients.



Even higher performance
If you need even more speed, you can use an Activation Code to perform a quick upgrade to Eco Dry + and the Fast Cycle for unwrapped instruments.



Built-in data logger
The integrated data logger saves the sterilization cycles on a high-capacity USB stick without additional cables and external devices.



User identification
If you would like to extend the documentation, there is a quick and simple upgrade available offering you the option of user identification and traceability of the approval confirmation.



Barcode label printer
The label printer can be connected to the sterilizer to print barcodes. Combined with the built-in data logger your traceability system is enhanced.

The essentials of sterilization

Simplified work processes.

The Lina sterilizers meet all requirements for your daily practice: simple operation, ergonomic and functional design, appropriate sterilization cycles and upgradeable functions guarantee high efficiency leading to maximum results.



Lina



Ease of use
The touch screen display enables smooth operation. The simplified user interface and menu structure support practices in all daily activities.



ECO B sterilization program
The cycle time can be reduced by half for small loads.



Design and maintenance
The easily removable cover allows effortless access to the water tanks without tools. Thanks to modular feet and compact layout the sterilizer fits in anywhere.



Traceability and upgradeability
The documentation of sterilization cycles is automatically saved via a high-capacity UBS stick. For even more flexibility, use the Activation Code system to activate additional functions to meet your changing practice needs and future requirements.



Barcode label printer
The label printer is a quick and easy tool to link the sterilization cycle with patients files. In combination with the integrated data logger, it improves your traceability system.

Significant for your needs

Discover upgradeability.

The Lyla S type sterilizer offers the best cycle time in its segment and impresses through its upgradeability. The Activation Code system provides Activation Codes that offer a tailored opportunity to enhance additional features that meet your practice needs and comply with future requirements. Effectively, for customising and upgrading your sterilizer.



Lyla



Smart upgrades

The Activation Code system provides several codes that offer a tailored opportunity to enhance additional features that meet your practice needs and comply with future requirements.



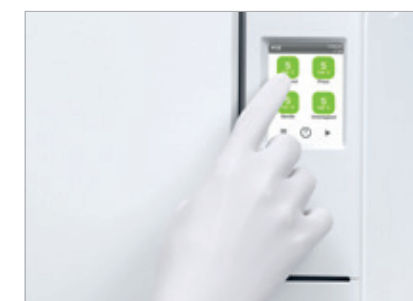
Super fast cycles

The different fast cycles available guarantee the possibility to sterilize several instrument types, including hollow bodies, both wrapped and unwrapped.



Secure traceability

With the integrated built-in USB data logger, the optional label printer and the W&H Steri App, Lyla offers a comprehensive traceability system that is customised to your needs.



Simple operation

The Lyla colour touch screen with its simple menu structure has been selected and designed to make your daily work easier, faster and more efficient.

High capacity and efficiency

Lexa offers versatile cycle program options for medium and larger loads, guaranteed by the closed-door drying process with HEPA filters and the use of fresh water for each cycle.



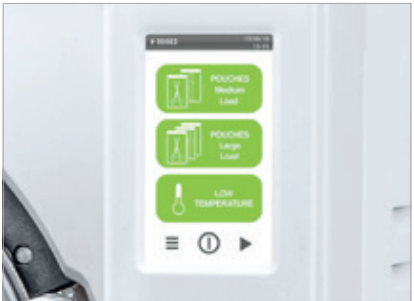
Lexa



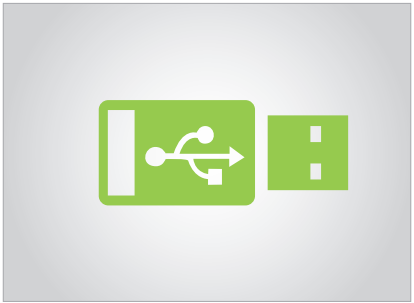
High efficiency and capacity
Lexa provides a large chamber capacity. The sterilizer comes with 4 large trays along with a unique rack providing larger loading surface and more loading options.



Customisable drying time
Lexa offers versatile program options for medium and larger loads in order to reduce overall cycle duration.



Increased usability
Due to the simple and intuitive menu interface, high-end colour touch screen and ergonomic design.



Customizable traceability system
Increased protection due to a complete and customizable traceability system including an automatic digital cycle recording on USB stick.

Enhanced traceability thanks to EliTrace

Benefit from a new level of traceability of your sterilizer: From now on, you will not only know exactly which cycles have been carried out at what time and date, but also which instruments were sterilized within this cycle.

The feature is available on Lisa.
More information at **wh.com**

1

Database Creation

Create your instrument database directly on the display of your sterilizer, on your smart device via W&H Steri App or PC.

2

Labelling and loading

Stick the related pre-printed QR code labels on each sterilization package before loading and make the link cycle-instrument.

3

Load release and status check

After the sterilization cycle, scan directly via W&H Steri App to check the status.



Unique upgradeability thanks to Activation Code system

The Activation Code system is an innovative upgradeability system that offers you a cost-efficient, rapid and customised opportunity to activate additional features to meet your changing practice needs and future requirements.

The Activation Code system is made for Lisa Mini, Lara XXL, Lara XL, Lara, Lina and Lyla.
More information at **activation.wh.com**



Performance

The “Performance” feature allows even faster cycle times by upgrading to Eco Dry +, which automatically adapts the drying time to the mass of the load.



Traceability

The “Traceability” feature enables user identification and load release confirmation. Identification is secured by a PIN directly on the sterilizer and the W&H Steri App.



EliTrace

With “EliTrace”, the sterilization process can be traced and documented down to the individual instrument or kit. Without any additional software or computer.



Fast cycle

The “Fast cycle” feature enables sterilization of unwrapped instruments, including handpieces. For a quick cycle for in-between.



B cycle

The “B cycle” feature upgrades Lyla to B type sterilizer according to EN 13060.



Remote data storage

The “Remote data storage” feature is the ideal addition for the digital cycle documentation. It offers the possibility to save cycles directly on PC.



Warranty Extension

The Activation Code “Warranty Extension” extends the warranty of the sterilizer by 12 months.



All in One

The “All in One” feature provides all benefits at once – your sterilizer receives an unattainable price-performance ratio.

Accessories

Compact, practical, good.
W&H offers a wide range of accessories for optimization of the sterilization procedure. Minor extras lead to major results. Work in the dental practice becomes easier and your team saves time.



**EliSafe,
W&H Steri App, Sprint**



EliSafe label printer
The label printer is a quick and convenient tool to link the sterilization cycle with the patient file.



Barcode scanner
The EliSafe package includes a barcode scanner. This enables you to scan labels into the patient file.



W&H Steri App
With the W&H Steri App you are able to monitor up to 4 sterilizers in real time. The W&H Steri App enables you to recall cycle reports using the smart phone camera.



Sprint
To print out cycle protocols on thermal paper with 10-year paper warranty.

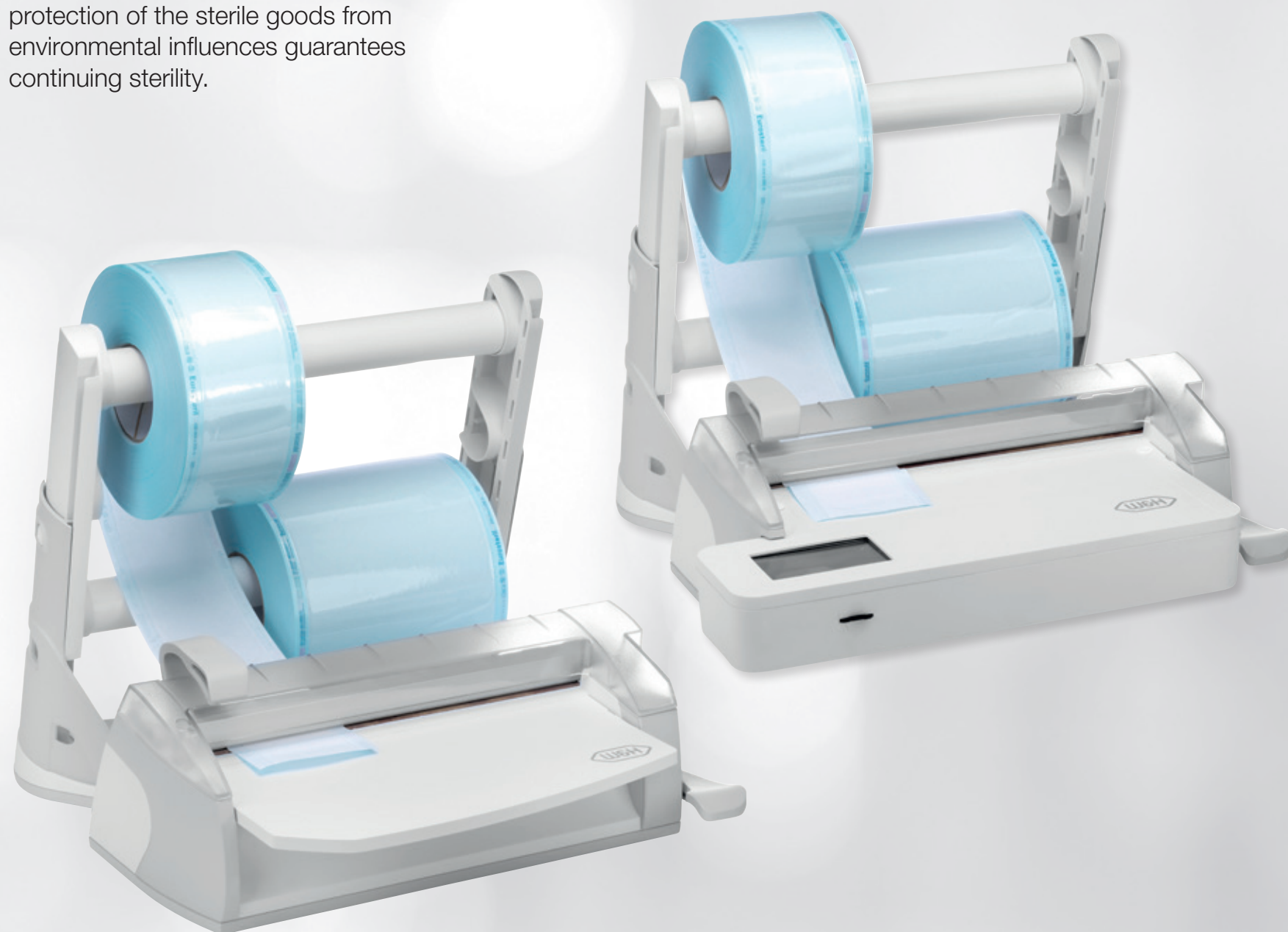


Helix test
The Helix test ensures optimum process control for type B sterilizers. The QR code on the test strips enables full traceability and easy use with eLog, the digital logbook.

A perfect sealing process

Safe and secure sterilization package.

It is not easy to keep a product sterile. Only absolutely hermetic and strong protection of the sterile goods from environmental influences guarantees continuing sterility.



Seal²/SealVal²



Perfect quality seals

The foil sealer creates a 12 mm wide seal in just two seconds with no risk of burning the sterilization package.



Convenient and user-friendly

Handling is optimized with this transparent sealing station and the integrated work surface.



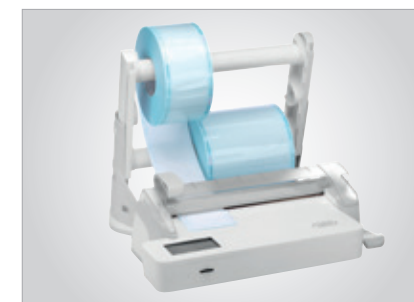
Flexible working

The patented double-roll holder takes a wide range of widths. The roll holder can be removed from the station and mounted on the wall. This allows flexible working in the smallest spaces.



SealVal² user-friendly touch screen

The touch screen and the intuitive menu structure facilitate the working process.



SealVal² full traceability

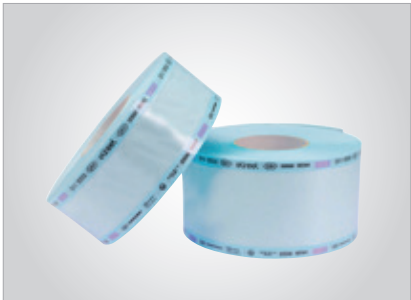
The recording of sealing parameters such as pressure, time and temperature ensures full traceability.

Secure packaging for sterile goods

EliReel rolls are the ideal packaging for the safe reprocessing of dental instruments in the sterilizer.



EliReel



Packaging at the highest level
The combination of paper and foil forms a reliable protective barrier against germs. EliReel is particularly resistant and has excellent drying properties.



Ease of use
To simplify daily use and avoid errors, there is only the steam indicator. It quickly and easily shows whether the sterile goods have already been sterilized. EliReel thus meets the highest requirements for sterile goods storage.



Peelable sealing seams
Pouches created with EliReel can be easily opened prior to treatment.

Water treatment systems

Ultrapure water for all systems.

Multidem supplies demineralized water for steam generation and can be used for many autoclaves and reprocessing devices.

Multidem



Compatible
Multidem is suitable for use with steam sterilizers and reprocessing devices. Up to 2 sterilisers can be connected simultaneously.



User-friendly
Cartridges can be replaced fast without tools. The cartridge can be positioned without a fixing.



Practical
Multidem is also equipped with a spray gun and is ideal for rinsing instruments prior to sterilization.



Economical
Multidem does not require an external power supply. It has an optimized ion exchange resin.



Safe
The purified water complies with the recommendations and guidelines for the correct reprocessing of instruments.

Water treatment systems

High-quality demineralized water.
Osmo is the best water treatment device to supply several sterilizers with high-quality demineralised water at the same time.



Osmo



Compatible
Osmo fills and drains up to 6 sterilizers automatically and simultaneously.



User-friendly
The screw-unscrew system makes cartridge replacement easier than ever. The cartridges can be replaced without any tools.



Practical
Osmo has a spray gun for manual filling of other devices or for rinsing instruments prior to sterilization.



Economical
The water storage tank has a capacity of seven litres. This makes Osmo not only the cost-effective solution for regions with poor water quality, but also for practices with a high water demand.



Safe
The purified water complies with the recommendations and guidelines for the correct reprocessing of instruments.

Water treatment systems

Distilled water of exceptional purity.
The Water Distiller enables economical production of distilled water for sterilization and produces pure water from tap water.

Water Distiller



User-friendly
Automatic heater cut-out, compact, silent and very simple to use. The Water Distiller stands out for its ease of use.



Practical
A water receiver is supplied together with the distiller.



Economical
The device supplies 4 litres of distilled water in less than 5 hours. With this volume, up to 8 sterilization cycles can be carried out in our sterilizers.



Dist 3
Dist 3 checks water quality by measuring the conductivity of the water.

BePro for perfect cleaning and disinfection

BePro protects people from infections

and materials from contamination. Depending on the work or treatment step, surfaces, instruments, dental units or hands must be cleaned and disinfected in a hygienically safe manner in everyday practice. The W&H BePro hygiene portfolio covers the entire hygiene product needs of dental practices.

BePro – particularly effective, efficient & compatible

Effectiveness

- › Broad pathogenic spectrum: bactericidal, mycobactericidal, tuberculocidal, fungicidal, virucidal
- › High cleaning and disinfecting efficacy
- › Tested and EN compliant

Efficiency

- › Extremely short exposure times
- › Convenient all-in-one products (cleaning and disinfection)
- › Low dilution rate for concentrates

Compatible

- › Excellent tested material compatibility even on sensitive surfaces (incl. artificial leather and acrylic glass)
- › Gentle to the skin and dermatologically tested
- › Refillable packaging



BePro – Suction Systems

For the cleaning, disinfection and maintenance of dental unit's suction system and spittoon bowl.



BePro – Surfaces

For the cleaning and disinfection of

- › non-invasive medical devices e.g. dental units incl. upholstery, exterior parts of handpieces, patient environment.
- › large surfaces e.g. reception desks, waiting rooms, floors, handles, doors.



BePro – Hand Care

For the cleaning and maintenance of hand and skin health.



BePro – Instruments

For the decontamination of dental instruments e.g. scalers, probes, scissors, pliers, burs, files.



BePro – Automated Reprocessing

For thermal washer disinfectors or washers like the W&H Teon or Teon +.

Teon, Teon+

CE

Trade name:	Teon	Teon +
Power supply:	400 V AC; 50–60 Hz/230 V AC; 50–60 Hz	
Current:	16 A	
Overall dimension (w × h × d):	600 × 835 × 600 mm	
Space required for installation (w × h × d):	598 × 835 × 1,200 mm (in total with opened door)	
Weight (empty):	74 kg	78 kg
Smart Dry:	●	–
Dry Plus:	–	●
HEPA filter:	–	●
Cold water connection:	●	●
Hot water connection:	–	●
Demineralized water connection:	●	●
Auto-close – automatic door lock:	●	●
Number of integrated dispenser pumps for liquid products:	2	1
Integrated dispenser module for rinse aid:	●	●
Salt tank – located in the front door:	●	●
Number of programs:	5	6
Number of customizable programs:	2	2
Cycle time (time for Vario TD Dental program):	49'	74' including active air-drying

Thed, Thed+

CE

Trade name:	Thed (Plus edition) ⁽¹⁾	Thed (Plus edition) ⁽¹⁾	Thed	Thed
Version:	Undercounter	Tabletop	Undercounter	Tabletop
Power supply:	3N 380–415 V; 220–240 V		220–240 V	
Frequency:	50–60 Hz		50 Hz	
Current:	13-16-32 A		16 A	
Overall dimensions (w × h × d):	598 × 815 × 628 mm	598 × 599 × 628 mm	598 × 815 × 628 mm	598 × 599 × 628 mm
Space required for installation (w × h × d):	600 × 818 × 630 mm	600 × 603 × 630 mm	600 × 818 × 630 mm	600 × 603 × 630 mm
Weight (empty):	72 kg	54 kg	72 kg	54 kg
Weight (fully loaded):	104 kg	76 kg	104 kg	76 kg
Chamber volume:	64 l	64 l	64 l	64 l
Active drying:	●	●	●	●
HEPA filter:	●	●	●	●
Cold water connection:	●	●	●	●
Demineralised water connection:	●	●	●	●
Warm water connection:	○	○	○	○
No. of peristaltic pumps:	3	2	3	2
No. of programs:	4	4	4	4
No. of customisable programs:	4	4	4	4
Cycle time including drying ⁽²⁾ :	Standard ⁽³⁾ Intense ⁽³⁾ Fast ⁽³⁾ Handpieces ⁽³⁾	55' 80' 43' 35'	Standard ⁽⁴⁾ Intense ⁽⁴⁾ Fast ⁽⁴⁾ Handpieces ⁽⁴⁾	84' 110' 68' 55'

● default ○ optional

⁽¹⁾ The Plus edition refers to the fully featured device, ⁽²⁾ Total cycle time may vary depending on the type and load weight, drying phase duration, water supply pressure and temperature, voltage fluctuations on the mains supply and other factors. ⁽³⁾ Three-phase version, ⁽⁴⁾ Single-phase version at 230 V

U-Son

CE

Trade name: Type:	U-Son RIW-203	U-Son RIW-206
Tank capacity:	3 litres	6 litres
Recommended operating capacity:	2.1 l	4.4 l
Supply voltage:	230 V; 50/60 Hz	
Input power:	120 W	180 W
Input power with heating:	100 W	200 W
Weight (kg):	2.8 kg	4.7 kg
Overall dimensions (w × h × d):	265 × 220 × 165 mm	325 × 280 × 180 mm
Tank dimensions (w × h × d):	240 × 100 × 135 mm	300 × 150 × 150 mm
Number of transducers:	2	3
Ambient conditions:	Temperature from 5 to 40°C; rel. humidity 80% up to 31°C with linear decrease up to 50% at 40°C	
Installation category:	Class II according to IEC 61010-1	
Classification:	2017/745 Medical Device Regulation Class I, Non Active MD, Non Invasive MD, Non Implantable MD	

Assistina Twin

CE

Trade name: Type:	Assistina Twin MB-302
Process:	Cleaning of spray channels, lubrication
Suitable for:	Straight and contra-angle handpieces, turbine handpieces, air scalers, air motors
Supply voltage:	100–240 V AC
Maximum power consumption:	18 VA
Air consumption:	approx. 40 NI/min
Operating pressure:	5–10 bar (controlled via an integrated, automatic pressure controller)
Overall dimension (w × h × d):	297 × 190 × 435 mm
Weight:	3.5 kg
Capacity:	200 ml W&H Activefluid cleaning solution, 200 ml W&H Service Oil F1

Assistina One

CE

Trade name: Type:	Assistina One MB-301
Process:	Cleaning the spray channels, lubrication
Suitable for:	Straight and contra-angle handpieces, turbine handpieces, air scalers, air motors
Air consumption:	approx. 50 NI/min.
Operating pressure:	5–10 bar (controlled via an integrated, automatic pressure controller)
Overall dimension (w × h × d):	166 × 243 × 383 mm
Weight:	2.2 kg
Capacity:	200 ml W&H Activefluid cleaning solution, 200 ml W&H Service Oil F1

Lisa

CE0001 CE0487

Trade name: Type:	Lisa 17 VA131-17	Lisa 22 VA131-22
Chamber size:	17 l	22 l
Power supply:	200–240 V AC; 50/60 Hz; 10 A	
Power consumption:	2.0–2.4 kW	
Overall dimension (w × h × d):	465 × 452 × 634 mm	
Weight (empty):	46 kg	47.5 kg
Main/used water tanks:	4.8/4.8 l	
Working range:	7 to 15 cycles	
Usable space in chamber (w × h × d) ⁽¹⁾ :	195 × 195 × 312 mm	195 × 195 × 400 mm
Connection types:	5 USB ports, 1 Ethernet port, integrated automatic water filling connection	

(1) Usable space is referred to standard rack configuration

Lisa Mini

CE0001

Trade name: Type:	Lisa Mini RIS-303	Lisa Mini RIS-305
Chamber size:	3 l	5 l
Power supply:	200–240 V AC; 50/60 Hz; 10 A single phase 100–125 V AC; 50/60 Hz; 12 A single phase	200–240 V AC; 50/60 Hz; 10 A single phase
Power consumption:	2–2.4 kW (220 V)/1.2–1.5 kW (110 V)	
Overall dimension (w × h × d):	440 × 200 × 581 mm	440 × 200 × 666 mm
Weight:	21.9 kg	24.4 kg
Main/used water tanks:	1.6 l/0.6 l	2.5 l/0.6 l
Working range:	3 to 7 cycles	
Average air consumption:	50–60 (Nl)/min (13.2–15.8 (N)gal/min)	
Working pressure:	5–10 bar (73–145 psi)	
Connection types:	5 USB ports, 1 Ethernet port, automatic water filling kit	

Lara XXL

CE0001 CE0487

Trade name: Type:	Lara XXL RIS-338
Chamber size:	38 l
Power supply:	200–240 V AC; 50/60 Hz; 12 A single phase
Power consumption:	2.4–2.88 kW
Overall dimension (w × h × d):	492 mm × 455 mm × 797 mm
Weight (empty):	61 kg
Main/used water tanks:	4.8 l/5.1 l
Working range:	5 to 10 cycles
Usable space in chamber (w × h × d) ⁽¹⁾ :	230 × 230 × 560 mm
Connection types:	5 USB ports, 1 Ethernet port, automatic water filling kit

(1) Usable space is referred to standard rack configuration.

Lara XL

CE0001 CE0487

Trade name: Type:	Lara XL RIS-311
Chamber size:	28 l
Power supply:	200–240 V AC; 50/60 Hz; 10 A single phase
Power consumption:	2.0–2.4 kW
Overall dimension (w × h × d):	492 mm × 455 mm × 614 mm
Weight (empty):	54 kg
Main/used water tanks:	4.8 l/5.1 l
Working range:	5 to 10 cycles
Usable space in chamber (w × h × d) ⁽¹⁾ :	230 × 230 × 420 mm
Connection types:	5 USB ports, 1 Ethernet port, automatic water filling kit

(1) Usable space is referred to standard rack configuration

Lara

CE0001 CE0487

Trade name: Type:	Lara 17 RIL-117	Lara 22 RIL-122
Chamber size:	17 l	22 l
Power supply:	200–240 V AC; 50/60 Hz; 10 A	
Power consumption:	2.0–2.4 kW	
Overall dimension (w × h × d):	465 × 452 × 646 mm	
Weight (empty):	42.5 kg	44 kg
Main/used water tanks:	4.8/4.8 l	
Working range:	7 to 15 cycles	
Usable space in chamber (w × h × d) ⁽¹⁾ :	195 × 195 × 312 mm	195 × 195 × 400 mm
Connection types:	2 USB ports, integrated automatic water filling connection	

(1) Usable space is referred to standard rack configuration

Lina

CE0001 CE0487

Trade name: Type:	Lina 17 RIK-117	Lina 22 RIK-122
Chamber size:	17 l	22 l
Power supply:	200–240 V AC; 50 Hz or 60 Hz; 10 A single phase	100–125 V AC; 50 Hz/60 Hz; 12 A single phase
		200–240 V AC; 50 Hz or 60 Hz; 10 A single phase
Power consumption:	2.0–2.4 kW	110 V: 1.2–1.5 kW
		220 V: 2.0–2.4 kW
Overall dimension (w × h × d):	465 × 452 × 646 mm	
Weight (empty):	40 kg	42 kg
Main/used water tanks:	4.8/4.8 l	
Working range:	7 to 10 cycles	
Usable space in chamber (w × h × d) ⁽¹⁾ :	195 × 195 × 312 mm	195 × 195 × 400 mm
Connection types:	1 USB port in the front (additional 1 in the rear as option), automatic water filling kit (optional)	

(1) Usable space is referred to standard rack configuration

Lyla



Trade name: Type:	Lyla 17 RIN-210	Lyla 22 RIN-210
Chamber size:	17 l	22 l
Power supply:	200–240 V AC; 50 Hz or 60 Hz; 10 A single phase	100–125 V AC; 50 Hz/60 Hz; 12 A single phase 200–240 V AC; 50 Hz or 60 Hz; 10 A single phase
Power consumption:	2.0–2.4 kW	110 V: 1.2–1.5 kW 220 V: 2.0–2.4 kW
Overall dimension (w × h × d):	465 × 452 × 646 mm	
Weight (empty):	40 kg	42 kg
Main/used water tanks:	4.8/4.8 l	
Working range:	7 to 10 cycles	
Usable space in chamber (w × h × d) ⁽¹⁾ :	195 × 195 × 312 mm	195 × 195 × 400 mm
Connection types:	1 USB port in the front (additional 1 in the rear as option), automatic water filling kit (optional)	

(1) Usable space is referred to standard rack configuration

Lexa

Meets the requirements of ASME Boiler and Pressure Vessel Code



Trade name: Type:	Lexa 110 MN-111	Lexa 220 MN-111
Chamber size:	28 liters (7.4 gal)	
Power supply:	100–125 V AC; 50/60 Hz; 12 A Single Phase	200–240 V AC; 50/60 Hz; 10 A Single Phase
Overall dimension (w × h × d):	490 × 452 × 616 mm (19.3" × 17.8" × 24.3")	
Weight (empty):	48 kg (105.8 lbs)	
Main/used water tanks:	6.4/6.7 l (1.7/1.8 gal)	
Connection types:	5 USB ports, 1 Ethernet port	

EliReel

EliReel							
Width × length:	5.5 cm × 200 m	7.5 cm × 200 m	10 cm × 200 m	15 cm × 200 m	20 cm × 200 m	25 cm × 200 m	30 cm × 200 m
Paper:	60g/m²						
Plastic:	PET/PP (polyester and polypropylene)						
Duration of sterility:	180 days (6 months) when stored correctly (temperature 20–25°C and humidity 35–50%)						

Seal²



Seal²		
Voltage:	200/240 V AC; single phase	100/120 V AC; single phase
Frequency:	50/60 Hz	
Power:	180 W	
Isolation class:	I/IPX0	
Fuse:	N. 2–5x 20 T4 A	N. 2–5x 20 F10 A
Conditions of use:	Indoor use only Max. altitude: 3000 m a.s.l. Temperature: +5/+40°C Max. relative humidity: 85 % Max. voltage tolerance: ±10 % Overvoltage category: II Pollution degree: 1	
Main switch:	Bipolar	
Weight:	7.1 kg	
Welding area:	12 × 310 mm	
Welding temperature:	Constant	

SealVal²



SealVal²		
Voltage:	200/240 V AC; single phase	
Frequency:	50/60 Hz	
Power:	180 W	
Isolation class:	I/IPX0	
Fuse:	Nr. 2–5x 20 T5 A	
Conditions of use:	Indoor use only Max. altitude: 3000 m a.s.l. Temperature: +5/+40°C Max. relative humidity: 85 % Max. voltage tolerance: ±10 % Overvoltage category: II Pollution degree: 2 Max. surge (≤ 5s): 230 V + 1200 V Max. surge (> 5s): 230 V + 250 V	
Main switch:	Bipolar	
Weight:	8.3 kg	
Welding area:	12 × 310 mm	
Welding temperature:	Standard mode Free option mode	180°C min. 170°C max. 200°C (set by the user)

Multidem, Osmo, Water Distiller

		CE	CE
	Multidem	Osmo	Water Distiller
Water treatment principle:	Demineralization	Reverse Osmosis	Distillation
Direct connection to sterilizer:	yes	yes	no
Number of connectable sterilizers:	up to 2 units	up to 6 units	–
Possibility of manual filling:	yes (spray gun)	yes (spray gun)	yes
Fulfilling sterilization requirements:	yes	yes	yes
Water quality output:	0.5–2 µS/cm	0.5–5 µS/cm	5–10 µS/cm
Produced water:	60 litres/1h	30 litres/1h	4 litres/5h
Volume storage tank:	–	7 litres	4 litres
Water pressure (min./max.):	2–8.6 bar	0.5–5 bar	–
Main device dimensions (w x h x d):	12,4 x 12,3 x 47,6 cm	37 x 52 x 13 cm	23 cm (Ø) x 36 cm (h)
Water tank dimensions (w x h x d):	–	23 cm (Ø) x 35 cm (h)	17 cm (Ø) x 25 cm (h)
Weight:	2.7 kg	13 kg	3.5 kg
Electrical supply needed:	no	yes	yes
Electrical power supply:	–	230 V AC; 50/60 Hz; 0.6 A 115 V AC; 50/60 Hz; 1.2 A	230 V AC; 50 Hz
Wall mount:	no	yes	no
Backflow preventer according to EN1717:	yes	yes	–
Demineralized water according to EN13060 Annex C:	yes	yes	yes

Notes

[illegible]

Distribution:

W&H Dentalwerk Bürmoos GmbH

Ignaz-Glaser-Straße 53, Postfach 1
51111 Bürmoos, **Austria**

t +43 6274 6236-0

f +43 6274 6236-55

office@wh.com

wh.com

W&H Sterilization Srl.

Via Bolgara, 2
24060 Brusaporto (BG), **Italy**

t +39 035-66 63 000

f +39 035-50 96 988

office.sterilization@wh.com

wh.com

Pictures are for illustrative purposes only. Additional equipment and accessories shown are not included as standard.

20434 AEN Rev. 016 / 27.02.2025
Subject to alterations