

Score^s
experts in seating

work chairs
for office
environments



dental



medical



industry



office





experts in seating[®]

Doing your job with ease. If you can do that then you're a true professional. This also applies to all our expertise. You don't notice it – and that's exactly what makes the difference. Because after a day of sitting at work on one of our seating solutions, you still feel great. No lower back pain. No sore shoulders. No restless feeling in your legs. Because we're professionals who invisibly take care of other professionals. And we're very proud of that. With us you'll be sitting pretty.

Take a seat.





score makes the difference

page 6



a chair for every workplace

page 10



our branches

page 12



our work chairs

page 20



just sit healthy

page 62



support at the right points

page 64



sit down for a moment

page 66



Sitting ergonomically so you can work comfortably and feel fit and flexible. That's our goal. To achieve this, we develop and manufacture ergonomic work chairs that really make a difference. Exercise is important, but we believe sitting has to be healthy as well.

'We' are the approximately sixty problem solvers who are Score. We develop and manufacture our seating solutions in our own factory in Tolbert, in the province of Groningen in the Netherlands. We apply the most recent ergonomic standards, the latest techniques and best materials while taking all the challenges faced by people in sedentary professions into account. People stand at centre stage with us. Or better said, sit!



our own path

At Score, we like to do things our own way. Maybe our designs aren't trendsetting, innovative or super modern, but they are solid, robust and a little quirky. Solid chairs that you can literally use for decades. We don't follow the crowd but pave our own way! We listen to our customers' experiences and base our plans on what they tell us. When we see opportunities for improvement, we investigate together to see how they can be implemented. This has made us a reliable player in the market over the years.

our mentality

We value our relationships very much. Connecting people with short communication lines, honest and transparent; that's what we stand for. We want the best for everyone, both internally - for our colleagues - and externally - for dealers and anyone who takes a seat on our products. If you are able to enjoy doing the things that are important to you, and we can contribute to that in our own way, then we're satisfied.



we take the burden off you

You deserve the perfect seating solution. One you never have to worry about. This may sound a bit vague, but what matters is that our craftsmanship takes the burden off of you. There's always room for improvement. Whether it's our processes, products or your sitting posture. Because we may have great ideas, but it's your experience that counts. We improve ourselves by listening - to the market, to the developers of new technologies and to you as a user. Learning by listening. That's Score.



our promise

We are problem solvers. Every component in our products has a function and everything is there for a reason. Because quality is all about the details. That's why we call ourselves experts in seating. We know the ins and outs of the various industries we develop our products for. Even yours. So we work every day to ensure that you experience this too. That, while you're sitting, you really feel that we're thinking along with you... and ahead. We find solutions to problems you didn't foresee yourself. With an eye for detail, with passion and inspiration. Sitting comfortably so you can concentrate on doing your job. That's our promise to you.

a chair for every workplace

There's simply no such thing as one universal (work) chair, perfect for every user and work environment. Different requirements apply to a chair in a workshop than to an office chair.

At Score, we made a distinction between four major branches – Dental, Medical, Industry and Office – each with their own specific work stations and associated activities. So we developed a range of seating solutions that take into account both workplace-related requirements and the wishes of the user. After all, sitting comfortably and ergonomically while working are paramount at Score.

“Sitting relaxed makes my job a lot more fun. That’s why I have a chair from Score!”





dental

Dentistry is a sector all its own. Intensive treatments where you, as a dental care professional, regularly have to twist and turn in difficult positions in order to do your job properly. A chair or saddle chair that supports you well is absolutely essential. But not every seating solution is up to this challenge! 70% of dental care professionals regularly have back problems; and you certainly don't want that. That's why we developed ergonomic chairs and saddle chairs that you can sit on comfortably and ergonomically. Even for longer periods at a time and if you have to twist and turn in difficult positions. They provide your body with the right support so you can easily change position or move around the workspace. For example, to grab another instrument or take a quick look at an X-ray. This is how we ensure you are relaxed and full of energy at work so you can focus on your patient.



medical

The seating solutions must also meet specific requirements in medical work environments. Because a waiting room chair is not a phlebotomy chair and a chair in the operating room is very different from a chair behind the reception desk. That's why we developed a range of seating solutions for hospitals and other medical environments. Our upholstery is, among others, urine, blood and mould resistant. For example, PUxx can be cleaned with 70% alcohol, so this upholstery meets the highest hygiene requirements. Score takes the staff's healthy working posture and comfort into account. Whether you're a nurse, doctor or laboratory technician, a chair that offers you the right support is super important. So you have enough energy left after a day's work to enjoy life.



industry

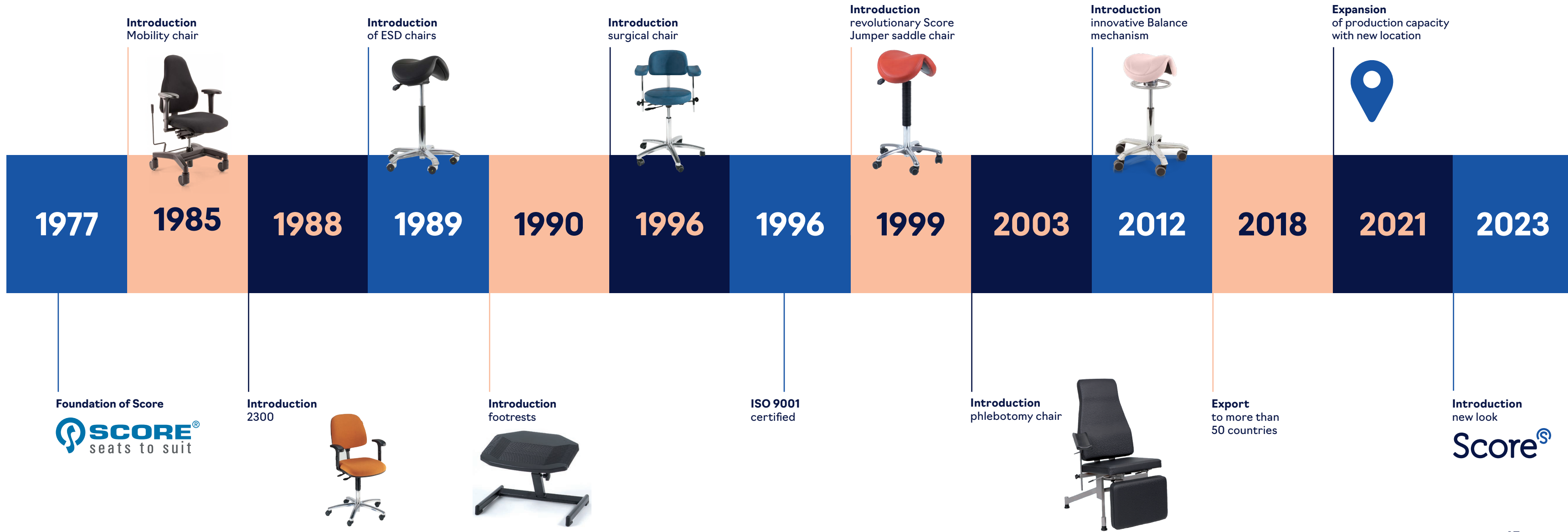
Only the best is good enough for you. That's why we developed Polyurethane seating solutions that are perfect for demanding work in industrial workplaces, including ESD and cleanroom laboratories. They are resistant to chemicals and are easy to keep clean. Chairs that can take a beating, made of an aluminium base combined with a seat and back made of PU (Polyurethane) or beech. Materials that you can use for years, even under extreme conditions. For workplaces in electronics, we have ESD chairs that safely discharge built-up voltage to the floor. Especially for cleanrooms, we have chairs with a HEPA-filter to collect all undesirable dust particles. Robust chairs that you will still sit comfortably on after hours of work.



office

More and more companies are investing in the health and vitality of their employees. This is especially important in the office, because office workers – working hours and private time combined – sit an average of more than ten hours! And that's not good for our bodies. We're happy to offer you the possibility of working alternately between standing and sitting. On a saddle chair, for example! Because it actually combines the best of both worlds: on the one hand, the healthy posture of standing and, on the other hand, the stability and comfort of traditional sitting. Whether you sit on a saddle chair or a regular chair, when you sit properly and your body gets the support it needs, you can relax longer and no undesired tension builds up in your muscles causing neck and shoulder complaints. They provide the right support which in turn promotes energy and concentration levels. *We've got your back!*

expert in seating since 1977



Of course, our work does not stop at developing, producing and exporting chairs. We also give advice, think along and answer every question you have. That's service.

service and warranty

Score chairs are made with craftsmanship from high-quality durable materials in our own factory in Tolbert and are exported to more than 50 countries. Our chairs have a standard 5-year warranty. Ask about the exact conditions.

extensive score dealer network

Score supplies nationally and internationally through selected dealers only. There's always a Score dealer nearby. Well-trained workplace advisors at Score can advise on the best seating solution for your specific workplace in consultation with the Score dealer.

fast delivery program

Through our special fast delivery service, we ship a selection of high-demand chairs within 3 business days. Ask about the exact conditions.

trial period

See an interesting seating solution? Ask your dealer about the possibilities to try out a product.

showroom

You're also welcome to visit our showroom, which makes it very easy to compare a number of different seating solutions. If you make an appointment in advance, our experts will be happy to discuss all the advantages and features of the products you're interested in.



own product development and production

Bending steel, welding seams, drilling holes: a good product is perfect down to the smallest detail. That's why everything is done with equal care at Score: from assembly to packaging. In our own factory in Tolbert, our technical professionals work on our products with great precision. Products we developed ourselves! And our factory and office are located right next to each other. This means the communication lines between our product developers and production employees are short, allowing us to respond quickly to dealers and customers. We all work with heart and soul on new seating solutions that meet the current ergonomic standards and we keep everything in-house. We enjoy working together and being inspired, but we're also specialists and convinced of our expert craftsmanship. We pave our own way. That's Score!



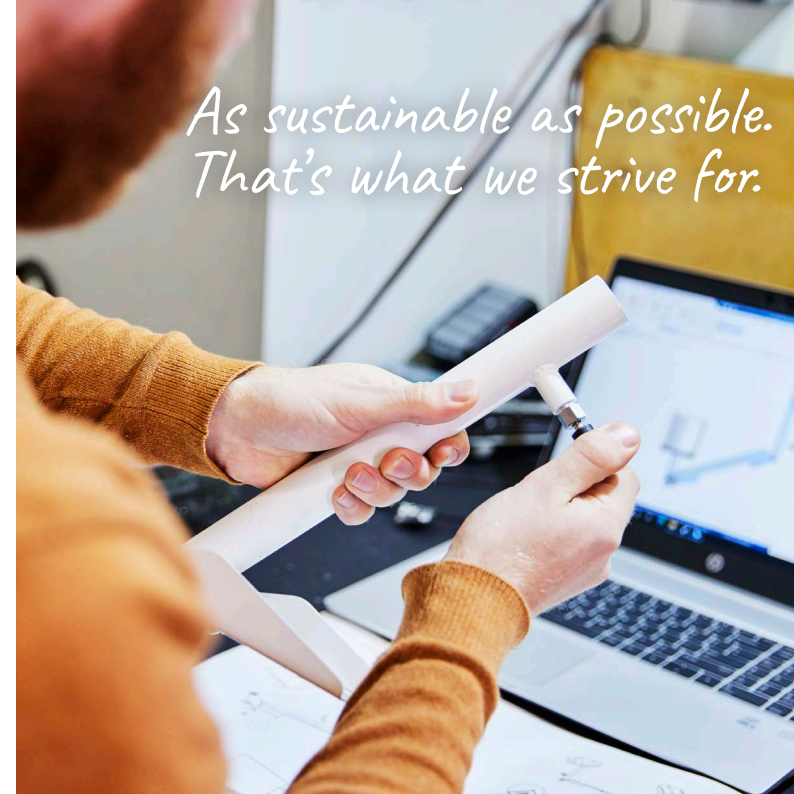
NEN-EN-ISO 9001 certification and quality management system

The success of a company is all about keeping your promises. Our promise is to manufacture high-quality seating solutions with respect for our environment. That's what Score stands for.

We guarantee the quality of our products with, among other things, our ISO certification. The quality management system helps us keep our organisation healthy. This allows us to continuously improve both the process quality and the quality of our products and services.

Thanks to this system, it's clear to everyone what we do, how we do it and that we comply with the applicable laws and regulations. It also helps us to further develop our organisational policy, to motivate and train our employees, to increase our quality awareness, to maintain lasting relationships with dealers and to increase general customer satisfaction.

*As sustainable as possible.
That's what we strive for.*



durability and sustainability equal quality

When you choose Score, you choose durability. Our products are super strong, solid and safe so you can use them for decades to come. Made from materials that can take a beating and are produced sustainably as much as possible. For example, our energy comes from the solar panels on our roof, our building is well insulated and we replaced all fluorescent bulbs with LED. We carefully select our metals, fabrics and plastics one by one and work closely with our suppliers. As sustainably as possible. That's what we strive for.



Check
scoreseating.com
for our entire
product range!



all-rounders in the score family

Score At Work is the most widely applicable and individually adjustable office chair of the Score family. Fully modular, so the individual components are interchangeable. And they're sustainably developed with a high recycling value. They're even available in a special ESD version.

You can combine the Score at Work any way you like with upholstery in many different materials and colours and it's equipped with three unique mechanisms to support the body perfectly in all respects. Armrests, a sliding seat, a special ergonomically shaped backrest and an inflatable lumbar support for the lower back: everything is possible with the Score at Work. The design complies with NPR1813, in other words this chair fit to purpose.

- Ⓢ Very versatile in any workplace; from office and laboratory to ESD rooms
- Ⓢ Combine exactly how you want
- Ⓢ Extra sustainable thanks to the high recycling value



score at work



- Fully modular
- Three different mechanisms
- Also available as a large version

score at work 01



- Recyclable
- Higher version and with footring
- Easy to assemble

score at work 02



- Fully modular
- The largest version of the four Score at Work chairs and with footring
- Several upholsteries and colours available

score at work 08



- Height-adjustable footboard
- With trumpet glides
- Perfect for high workplaces

one comfortable office chair in three sizes

Looking for a solid, ergonomically shaped office chair that's very comfortable? A chair that's suitable for almost everyone and that you can adjust quickly? Then you need the Score 5100, identical in design but available in three different sizes: Small, Medium and Large. The Score 5100 Line is also equipped with a synchro mechanism that allows you to perfectly align the backrest and seat, which not only makes you sit comfortably, but more importantly, reduces physical complaints to your neck, shoulders and back.

- Ⓢ Ergonomic shape and comfortable
- Ⓢ With synchro mechanism
- Ⓢ Available in the sizes Small, Medium and Large

score 5100 small



- Armrests included
- The smallest model from the Score 5100 Line
- With synchro-mechanism

score 5100 medium



- Hard-wearing Flex upholstery
- Gaslift height adjustment
- Choice of nine colours

score 5100 large



- The largest model in this line
- With a stable aluminium base
- A solid, comfortable and ergonomic office chair

“Life is just more fun when you feel fit. Thanks to my Score chair, I still have enough energy left to garden.”

For advice, please contact one of our advisors.

indestructible work chairs

A no-nonsense work chair, suitable for a large part of the working population. Ergonomically shaped, super durable and equipped with all the functions you need: that's the Score Ergo Line.

Score Ergo Line chairs are designed for many different people with a variety of occupations in various environments. Ideal for every work environment (even ESD). The various models are equipped with a footring or a footboard, which makes this chair ideal for high workplaces up to 115 centimetres! So everyone's friend without having to compromise on quality and craftsmanship.

- ⌚ All-round work chair
- ⌚ Adjustable for optimal sitting comfort
- ⌚ Suitable for a variety of work environments



score ergo 2300



- Various hardwearing materials available
- No-nonsense office chair
- Armrests optional

score ergo 2301



- Higher than the Score Ergo 2300 and with footring
- Infinitely adjustable backrest
- Robust, functional design

score ergo 2302



- The tallest of the Score Ergo chairs and with footring
- Different upholsteries and colours
- For every working setting

score ergo 2308



- With adjustable footboard
- Trumpet glides
- Ergonomic and multi-adjustable

the work chair powerhouses

Do you have a taller or broader build and therefore want a chair that can take some rough treatment? Then, the Score 5000 is perfect for you. This powerhouse is more spacious than the average work chair, but no one will notice. The ideal chair for people up to 120 kilos. We even have a heavier version for people up to 150 kilos. Thanks to the Score 5000's various adjustment options, you'll be sitting super comfortably. A headrest, braked wheels and extra support for your lower back are also available as options. Everything to just sit healthy and be able to work well!

- 🔗 Made for larger people
- 🔗 Suitable for a variety of work environments
- 🔗 Also available in a heavier version

score 5000



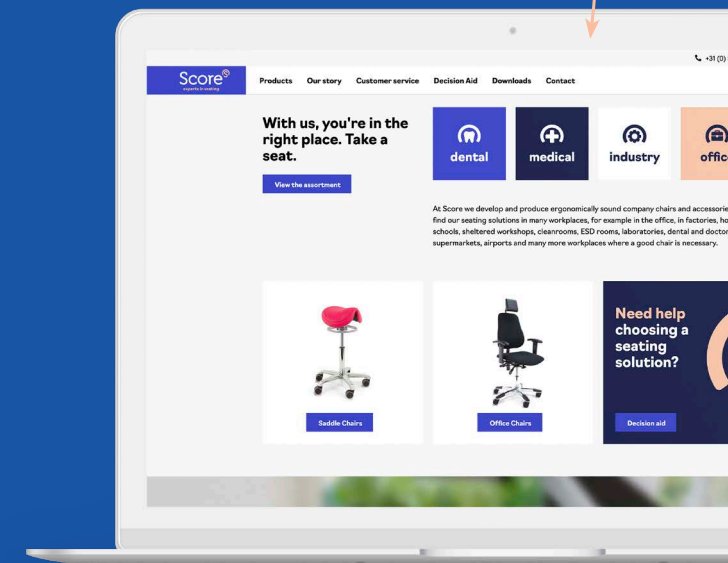
- For people up to 120 kg
- Available in comfortable Trevira and Flex upholstery
- Also available in ESD and Arthrodesse version

score 5000 enforced



- For people up to 150 kg
- Seat angle adjustment in 3 positions
- Available with height- and width-adjustable armrests

Choose your product and configure it with our handy product configurator!



functional heavyweights

Do you have a slightly larger or heavier than average build? Then you don't want to have to wonder whether your chair will 'hold' you. No need to worry with the chairs from the Score MaXX Line. A Score MaXX is made of strong, durable, high-quality materials that give you a safe, solid and comfortable feeling while sitting. The seats and backrests of the three versions are interchangeable so your Score MaXX fits your build perfectly. For those who want to have all the extra conveniences, we also have a series of handy accessories for even more seating comfort. Sitting all that much better.

- Ⓢ Made for larger and heavier people to 250 kg
- Ⓢ Available in the sizes Small, Medium and Large
- Ⓢ Seat and backrest with beautiful Leatherette inserts



score maxx S



- For people up to 250 kg
- Equipped with various accessories for extra seating comfort
- Strong and functional, durable and ergonomic design

score maxx M



- For people up to 250 kg
- Equipped with various accessories for extra seating comfort
- Strong and functional, durable and ergonomic design

score maxx L



- Many setting options for the perfect support
- Armrests included
- Adjustable seating angle

Would you like to be informed about our **latest news**? Sign up for our newsletter.



“Thanks to my ergonomic chair from Score I can relax at and enjoy the campsite.”



a chair you can scoot around on

Moving around without having to put in too much effort? It's possible with the Score mobility working chairs. They're specially designed for people who have difficulty walking or who suffer from muscle and joint pain or fatigue. The frame has free space for your feet, so you can scoot around the area taking small steps while sitting. And is equipped with a brake lever as well. Thanks to the extra light moving wheels, you can move about with minimal effort!

The mobility working chairs are available in various fabrics and a range of colours. You can choose from different mechanisms that make sitting even more comfortable.

- ☞ Scoot easily while sitting due to the H-frame and large castors
- ☞ Standard equipped with brake, foldable foot bar and adjustable armrests
- ☞ With rotation locked gaslift so your feet stay centre to the frame



score mobility working chair at work



- Available in 2 seat and backrest sizes
- Equipped with 4D armrests (adjustable in height, width, depth and rotatable)
- Choice of synchro or flowmatic mechanism

score mobility working chair 2300 (arthrodese)



- Backrest has a synthetic back for extra protection
- Also available with independently adjustable leg heights
- Available in fixed or adjustable seating mechanism

score mobility working chair 5000 (arthrodese)



- Suitable for people weighing up to 120 kg
- Wider backrest and ergonomic seat
- With synchro mechanism

score mobility working chair 5100 (arthrodese)



- Available in Small, Medium and Large
- With 3D armrests adjustable in height, width and depth
- With synchro mechanism

the dynamic shape of sitting

Experience the comfort of a saddle chair! On the ergonomically shaped saddle seat, you automatically assume a healthy sitting position when your feet are firmly on the floor. Your back relaxes in a natural way, which not only improves your breathing but is also good for your circulation and digestion. And you're also very mobile on a saddle chair. The Score Jumper and Score Amazone are our saddle chair super stars.

Choose from our various mechanisms, including our unique Balance mechanism that moves subtly along with you. We also have the cheerful Score Jolly and the compact Score Polo. They're available in a variety of designs and with various accessories and mechanisms. Score has thought of everything!

- Ⓢ Promotes a healthy back and sitting posture
- Ⓢ For good breathing, circulation and digestion
- Ⓢ Available in various versions and with our unique Balance mechanism



score amazone



- Narrower seat to reach a larger hip angle
- Choice of 3 mechanisms including the unique Balance mechanism and available with lumbar support and armrests
- Also available with a black base

score jumper



- Wider seat for broader support
- Promotes active sitting posture
- Choice of 3 mechanisms including the unique Balance mechanism and available with lumbar support and armrests

score polo



- Fits into any space, any interior
- With a flexible base
- Light weight and easy to stow away

score jolly



- Soft bicycle-type seat
- Available with a a fixed seat angle or a Balance mechanism
- Convenient, comfortable, practical and compact

stools for dynamic sitting

You can do just about anything with the Score Opti Line stools. You can move to the left and right, up and down, and even opt for a footring for high workplaces. A durable stool with a seat made of beech, PU (Polyurethane) or Stamskin, depending on the work environment. There's even an ESD safe version, for example.

They're real all-rounders you can use as a side stool or work stool. A Score Pico was even developed especially for kindergarten teachers, where they can sit at the same height as the children.

- Ⓢ Dynamic stools with an array of options
- Ⓢ Suitable as a work stool or side stool
- Ⓢ Also in an ESD version



Wondering if any of these chairs/stools would suit you? Ask a dealer for the possibilities

score opti 2200



- All-round stool
- Suitable for work surface heights of 70 - 85 cm
- Height adjustable by ring-shaped gaslift

score opti 2210



- Higher than the Score Opti 2200
- Height adjustable by ring-shaped gaslift
- Suitable for work surface heights of 80 - 100 cm

score opti 2212



- The highest of the three Score Opti variants
- Suitable for work surface heights of 90 - 115 cm
- Height adjustable by ring-shaped gaslift

score pico



- The kindergarten teacher can sit at the same height as the child
- Compact and very strong
- Base available in red, yellow, green and blue

stools for every situation

Who has never sat on one? Our Score Base Line stools set the standard for stools. Simple but super functional. A durable stool with a seat made of beech, PU (Polyurethane) or Stamskin with an extra strong frame. You'll mainly find these compact, practical stools in schools and training centres. Robust, stackable, and available in a variety of cheerful frame colours. The Steps model even has footbars at four different heights. Handy!

One stool for spaces where young and older children as well as adults can sit comfortably. We've said it before. They're simply essential.

- Ⓢ The standard among stools
- Ⓢ Robust, stackable and floor friendly
- Ⓢ Available in various cheerful frame colours

score base 240



- Stackable up to 5 stools
- Available in seat heights 50, 55, 60 and 65 cm with a foot bar
- Floor friendly

score base steps



- Stackable up to 5 stools
- Same seat heights as Base 240, but with foot bars at 30, 34, 38 and 42 cm from the top
- Floor friendly



*“Thanks to my Score chair,
I keep enough energy at the end
of my working day to bake cakes
with my daughter.”*



support for your feet, rest for your legs

Do you have a high workplace and are you unable to reach the floor with your feet while sitting? Then you need a footrest. An essential item if your feet are dangling above the floor when you're sitting with your upper and lower legs at a right angle. This optimises your circulation and prevents restless legs.

We sold hundreds of thousands of the successful Score Basic 952 worldwide and now we have its improved successor: the Score Pro 952. It's practical and durable, you can easily adjust the height and inclination with your foot and we even have versions for ESD safe workplaces.

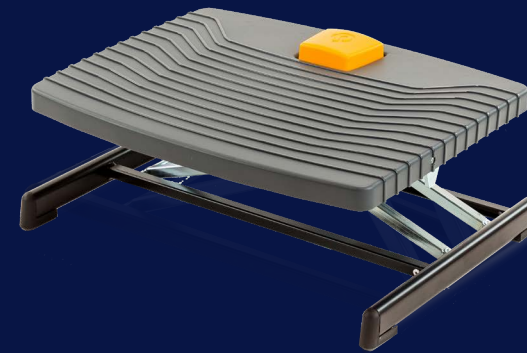
- Ⓢ The solution for dangling legs
- Ⓢ For optimal circulation
- Ⓢ Easily adjustable with one foot

score pro 952



- High-quality footrest
- Easy to operate by foot
- Also in ESD safe design

score pro 959



- Higher and larger than the Score Pro 952
- Footboard measure according to DIN 4556
- Also in ESD safe design



score basic 950



- Practical footrest
- Operate by hand
- Also in ESD safe design

score basic 952



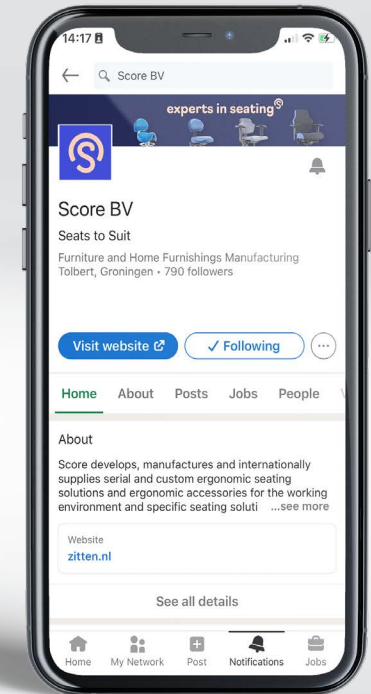
- Tilttable footboard
- Foot operated
- Also in ESD safe design

score discus 250 T



- Designer footrest
- User-friendly
- With gaslift, adjustable from 15 - 25 cm

Follow us on
LinkedIn,
Facebook and
YouTube.



People generally spend more time sitting than standing. At home, but mainly at work. And that's not good for our bodies. At Score, we focus on seating solutions, because we believe that sitting should also be healthy.

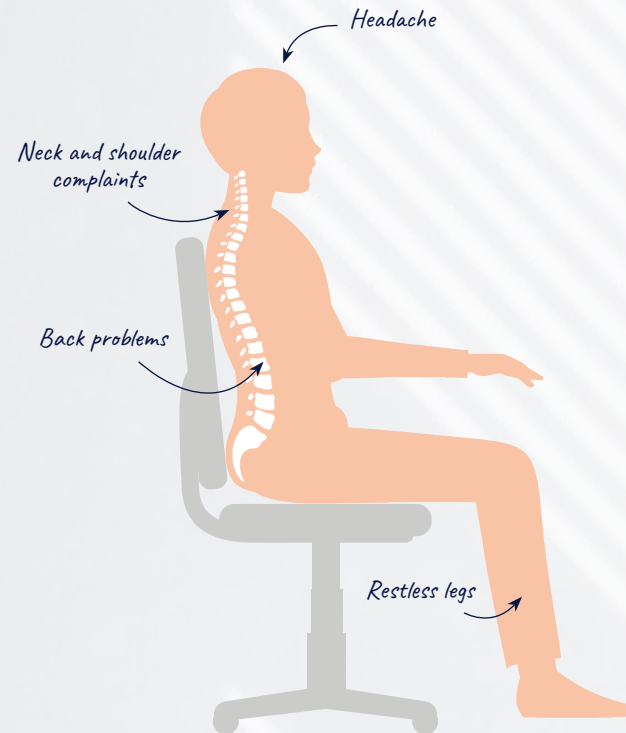
Sitting comfortably makes work more pleasant and you can concentrate better. After a workday you have more energy left to do fun things and you prevent physical problems. Because employees who sit a lot – have to stand for a long time or make repetitive movements for their work – often force their body into a certain position for a long period of time. When that posture is wrong, it quickly leads to physical irritation and fatigue, which in the longer term can lead to physical complaints, with long-term sick leave as a possible result.

Investing in 'good sitting posture' is a golden investment for companies and quickly pays for itself. It's one of the few affordable ways to increase employee productivity and prevent sick leave.

Happy employees, happy employers!

Our solutions to the law of cause and effect

Standing or sitting slightly incorrectly can have big long-term consequences. In the diagram on the right you will find an overview with complaints, causes and a possible solution. Do you have another problem or a question about it? Feel free to contact us. Our well-trained workplace advisers are experts on sitting and will be happy to advise you on the best seating solution for you and your specific workplace.



Complaint

Restless legs, irritation and loss of concentration

Irritation and loss of concentration

Neck and back problems

Fatigue and loss of concentration

Neck and shoulder complaints

Restlessness, lack of concentration and neck and shoulder complaints

Back complaints and fatigue

Cause

Seat is too high, feet don't touch the floor so no possibility to shift position and inhibits blood circulation

Seat depth is too small, so no possibility to shift position

The lack of a (non-adjustable) backrest, resulting in a bent trunk position, unilateral load on the joints and muscles in the back and more difficult breathing due to compression of the abdominal cavity

Unstable chair or seat, the body is constantly trying to find balance

Chair is not rotatable, resulting in uneven strain on the joints and intervertebral discs of the spine and on the ligaments and muscles in the back

The lack of - or inability to adjust - armrests, the body unconsciously searches for possibilities to rest the weight of the arms

Backrest does not provide sufficient support to the lumbar region, which puts too much strain on the spine because it cannot assume its natural position

Solution

Adjust a higher work chair, place a seat to the right height or a separate footrest with foot control

If possible, increase seat depth. Otherwise a work chair with sliding seat

Work chair with adjustable backrest

Work chair with a sturdy and stable base

Rotatable work chair

Install height and width adjustable armrests

Work chair with an ergonomically shaped backrest that fits into the lumbar region

A good work chair helps you stay focused, even after hours at your desk or precision work in the same position. It supports you in the right places and prevents physical irritations, muscle pain and fatigue and is easy to adjust so it suits you optimally in terms of height, seat depth and inclination.

The seat material should allow you to sit up easily, but you should not slide off. In addition, you should be able to clean it easily. Maybe in your industry it should even be fire-retardant or moisture-repellent. The chair should be stable. Your feet should have good access to the floor, or you should have a footrest at your disposal. And if you have a slightly longer stature, the seat depth should be extendable so that your upper legs get the support you need. The seat and back should be firm and comfortable at the same time, and your posture should be as natural as possible while sitting, so that you automatically sit as relaxed as possible. This, and much more, can be found in Score's seating solutions.

A comfortable headrest to support the neck and head

Stepless backrest with an even curve that supports the lower part of the back and lumbar region

Inclination of the backrest and seat can be easily adjusted

The backrest and seat are quick and easy to adjust in height

Seat depth large enough to shift position regularly, for tall people with extendable seat

Rotates smoothly, has a 5 star base and a circumference that suits the situation



Wider backrest and seat for large and/or tall people

Armrests can be adjusted in height, width and depth

Almost flat seat that is rounded at the front extra wide for large people

Easy to clean, material that is not too rough and not too smooth

Smooth-running castors for hard or soft floors

When people start a new job, they often just take their seats and the focus is more on their new colleagues and the work rather than on how they sit. This makes sense. Nevertheless, it is important to also pay a little attention to how you sit, and to adjust your chair properly.

Important for an optimal sitting posture is that you sit relaxed. For this, your joints should be in a neutral position – i.e. not at an uncomfortable angle. Sitting in the same position for long periods should require as little muscle strain as possible. And you should have room to vary your posture while sitting. The latter means that the seat is large enough and that you have enough room to move your feet. And then, of course, there are the settings of your chair. We'll go through those in the steps opposite.



Set your chair to the correct height

Just sit down and relax your shoulders. Place your hands on the work surface and make sure your forearms are at a 90-degree angle to your upper arms when setting your correct seat height.



Set your footrest

If you sit at the correct seat height, your hip and knee joints will form a right angle and your feet will be flat on the floor. Is the latter not the case (dangling legs)? Then you need a footrest.




Set your back support

Adjust the height of your backrest so the curve fits nicely into the curve of your back. This way, the backrest fits nicely and supports your back in the right place.



Set your armrests

Adjust your armrests to the correct height, width and depth. Relax your shoulders and let your arms hang down and rest your forearms on the armrests so your upper arms and forearms form a 90-degree angle.

 Feithspark 5
9356 BX Tolbert
The Netherlands

 +31 (0) 594 55 40 00

 info@scoreseating.com

 scoreseating.com