

# Planmeca ProScanner® 2.0

User-friendly and reliable imaging plate scanner



ENGLISH

**PLANMECA**

# Quality you can count on

Our new **Planmeca ProScanner® 2.0** imaging plate scanner is a high-quality option for fast and dependable intraoral imaging. With intelligent design details and outstanding durability, the scanner supports everyday tasks at a dental clinic – providing reliability that is hard to match.



## Reliable and dependable

**Planmeca ProScanner® 2.0** has been designed to be a seamless part of your clinic's workflow. It is a true workhorse imaging plate scanner that is maintenance-free and extremely durable. The compact scanner fits into any room, helping all clinics prevent downtime and ensure maximum efficiency.

## Smart imaging plates

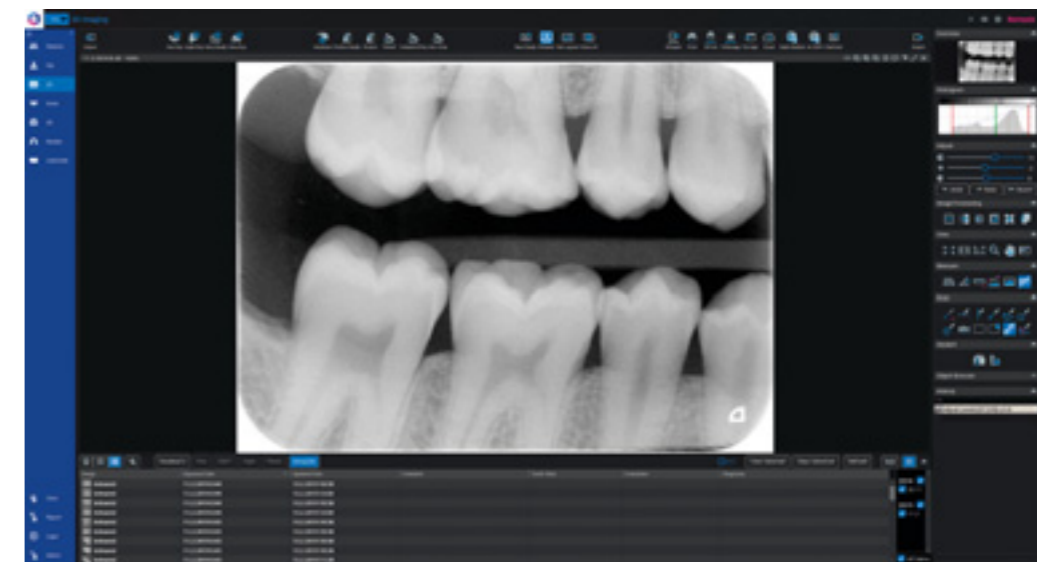
Planmeca ProScanner 2.0 utilises RFID technology for fast scanning and identification. The scanner's high-quality plates can be used numerous times and the integrated eraser instantly prepares them for further imaging. The flexible and bendy imaging plates are very comfortable for patients and available in the most common sizes – 0, 1, and 2.

## Easy to use

Planmeca ProScanner 2.0 significantly speeds up your intraoral imaging workflow with its fast scanning process. Just insert the imaging plate, scan it and diagnose the captured image. If the wrong side of the plate is accidentally exposed, it is easy to notice immediately from the captured image.

## Planmeca Romexis® software integration

Each imaging plate is equipped with a digital serial number so you can sort, view, and compare images for quality control, as well as count exposures by using the serial number of each plate in the **Planmeca Romexis®** software.



Imaging plate sizes	Size 0: 35 x 22 mm (1.38 x 0.87 in.) Size 1: 40 x 24 mm (1.57 x 0.94 in.) Size 2: 41 x 31 mm (1.61 x 1.22 in.)
Pixel size	30 µm
True resolution	12 lp/mm
Theoretical resolution	16.7 lp/mm
Bits per pixel / Gray scale	16 bit / 65538
Weight	4 kg (8.8 lbs)
Dimensions (H x W x D)	231 x 167 x 216 mm (9.1 x 6.6 x 8.5 in.)
Interfaces	Network
Eraser	Embedded



### Key benefits of Planmeca ProScanner® 2.0

- Maintenance-free imaging plate scanner designed for active use
- Flexible and durable imaging plates for enduring comfort
- Accelerated workflow due to a streamlined imaging process



Planmeca Oy designs and manufactures a full line of industry-leading dental equipment, including 3D and 2D imaging devices, CAD/CAM solutions, dental care units and software. Planmeca Oy, the parent company of the Finnish Planmeca Group, is strongly committed to better care through innovation, and it is the largest privately held company in the field.

Follow us on social media!



# PLANMECA

Asentajankatu 6 | 00880 Helsinki | Finland | tel. +358 20 7795 500 | fax +358 20 7795 555 | sales@planmeca.com | www.planmeca.com

Images may contain optional items not included in standard delivery. Available configurations and features may have country or area specific variations. Some products displayed above may not be available in all countries or areas. Rights for changes reserved.

Planmeca, All in one, Anamat Plus, Cobra, Comfy, DentoVac, Digital perfection, Economat Plus, Elegant, Flexy, Mini-dent, Perio Fresh, PlanEasyMill, Planmeca 4D, Planmeca ActiveAqua, Planmeca AINO, Planmeca ARA, Planmeca CAD/CAM, Planmeca CALM, Planmeca Chair, Planmeca Clarify, Planmeca Compact, Planmeca Creo, Planmeca Emerald, Planmeca FIT, Planmeca Intra, Planmeca iRomexis, Planmeca Lumion, Planmeca Lumo, Planmeca Maximity, Planmeca Minea, Planmeca Minendo, Planmeca Minetto, Planmeca mRomexis, Planmeca Noma, Planmeca Olo, Planmeca Online, Planmeca PlanCAD, Planmeca PlanCAM, Planmeca PlanClear, Planmeca PlanDesk, Planmeca PlanID, Planmeca PlanMill, Planmeca Planosil, Planmeca PlanPure, Planmeca PlanScan, Planmeca PlanView, Planmeca ProCeph, Planmeca ProFace, Planmeca ProID, Planmeca ProMax, Planmeca ProModel, Planmeca ProOne, Planmeca ProScanner, Planmeca ProSensor, Planmeca ProX, Planmeca Romexis, Planmeca Serenus, Planmeca SingLED, Planmeca SmartGUI, Planmeca Solanna, Planmeca Sovereign, Planmeca Ultra Low Dose, Planmeca Vision, Planmeca Viso, Planmeca Verity, Planmeca Waterline Cleaning System, Planmeca Xtremity, Proline Dental Stool, ProTouch, Saddle Stool, SmartPan, SmartTouch, Trendy, and Ultra Relax are registered or non-registered trademarks of Planmeca in various countries.